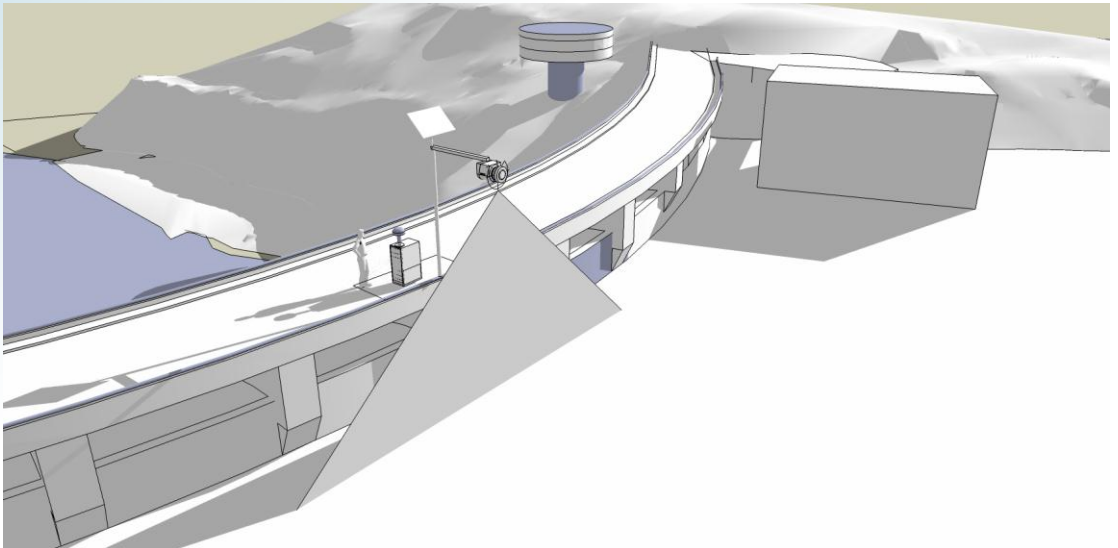


Contactless laser system for continuous monitoring
of water level in dams and large ponds



SYSTEM INFORMATION



GEWLM1.0

GEWLM1.0 – contactless laser system for continuous monitoring of water level in dams and large ponds.

Task:

GEWLM1.0 task is non-contact monitor the level of water surface near the dam. The system is equipped with a GPS receiver, GPRS communication module, complex power supply (solar panels, batteries, rectifier unit), combined panoramic camera (color image with high resolution, thermo-graphic image) and meteorological station. Information about water level, the exact coordinates, color and thermo-graphic image, wind speed, atmospheric pressure, temperature, precipitation are sent to regional or national control center in real time. **GEWLM1.0** maintains a local data backup within one month.

Remote manual control of the combined panoramic camera and management of digital relay outputs (control gates and pumps.) are available too.

GEWLM1.0 enable timely, appropriate response by the authorities, caring for security of large lakes.

Designed to prevent accidents and emergencies, the system finds place in the modernization of practical each basin.

Figure 1.1

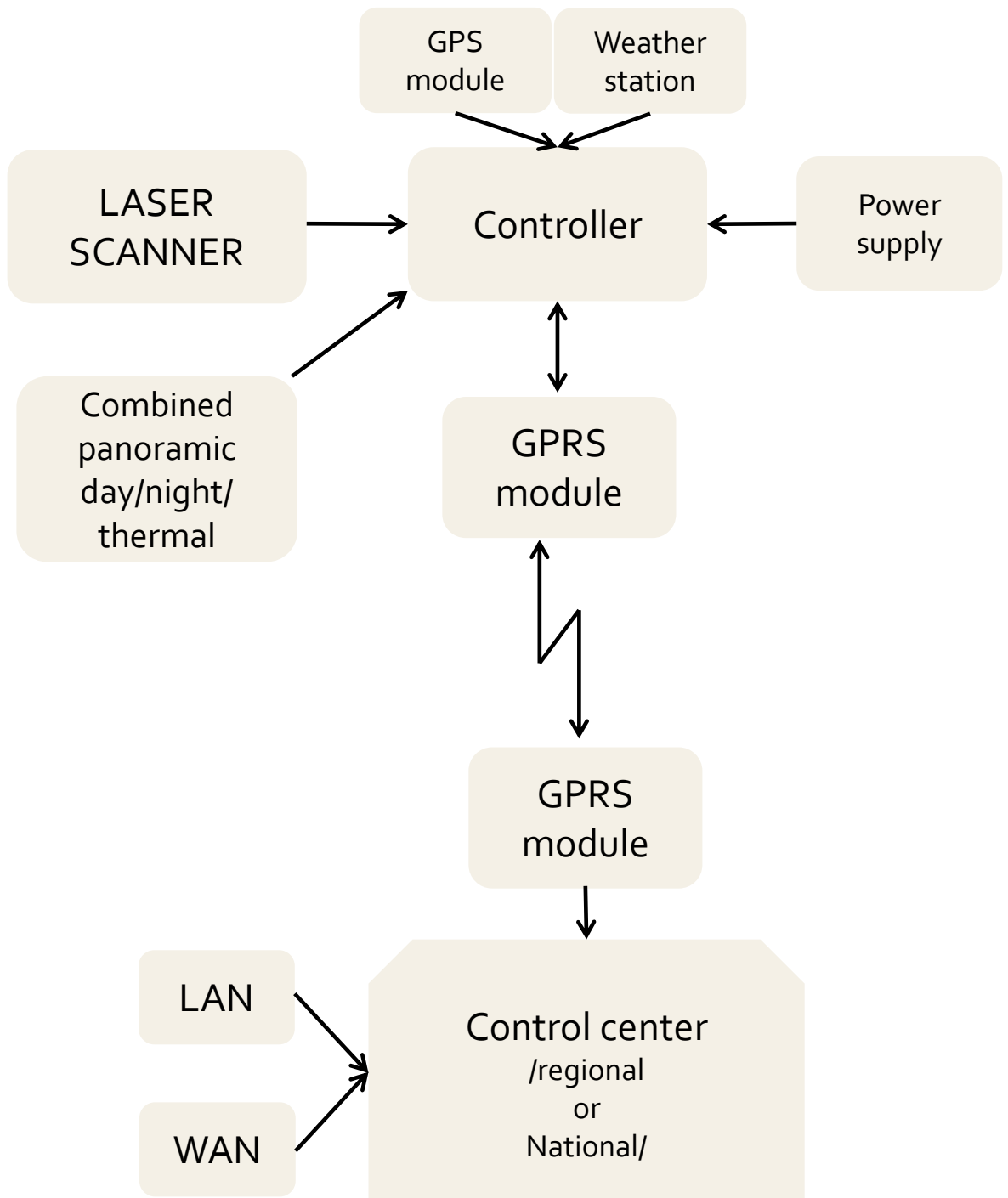


Figure 1.2

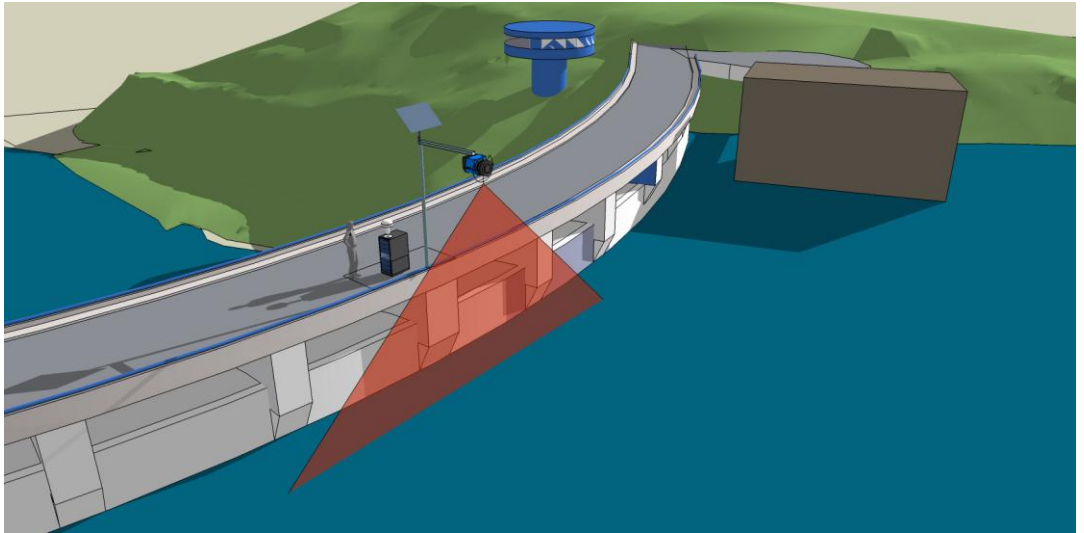
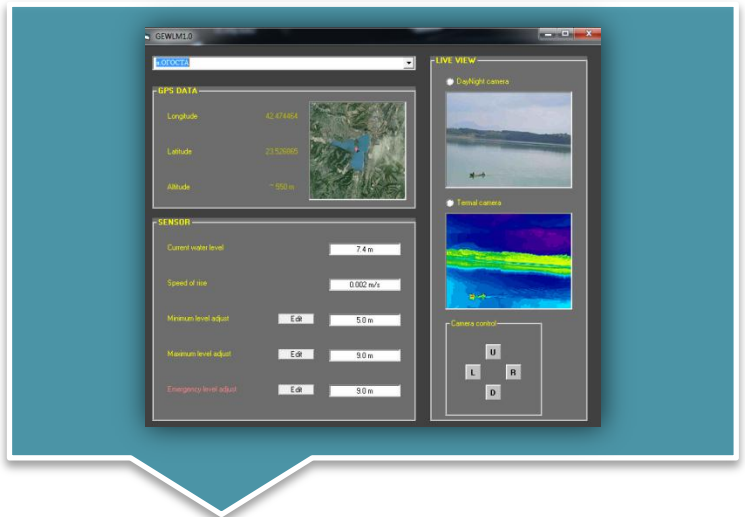


Figure 1.3



GEWLMI.0

GODO Electronics Ltd.
Tzarigradsko Shouse 131, ATM Center
Office 662
1784 Sofia
Bulgaria
Tel.: +359 2 9615555
Fax: +359 2 9615557
Mobile: +359 885 415448
office@godoelectronics.com
<http://www.godoelectronics.com>